

## AT Guide to Simplifying the Desktop

### Eldy

Eldy is software that turns any standard PC into an easy-to-use computer for people who have never used a computer before. It provides a simple interface that allows easy access to all the commonly used functions of a computer including email, internet, chat, documents, pictures and skype. It is free to download from [www.eldy.eu](http://www.eldy.eu) and can be set up to start automatically and sit over the regular windows interface.

The home screen is called the “The Square” (pictured below left) and from here all features can be accessed within a couple of clicks. It is also easy to return to the square from anywhere within the application as there is always a link provided on the bottom centre of the screen. The email (pictured below left) is very easy to set up as it walks you through the process and even creates an @eldy.org email address for you if required. If you want to use an email address you have already like gmail or hotmail that can be done also using either pop3 or IMAP protocol.



There is also a simplified Skype interface which enlarges contacts and hides many of the unnecessary features. A particularly nice feature is the exercise application that is designed to improve the users' mouse control. There is also a clearly written tutorial on all features in the Help section.

Eldy was created as part of an EU funded e-Inclusion project and as already stated above is free to download and use. It can be installed on PC (Windows, Linux and Mac), Tablet (Android) and/or Television (coming soon).

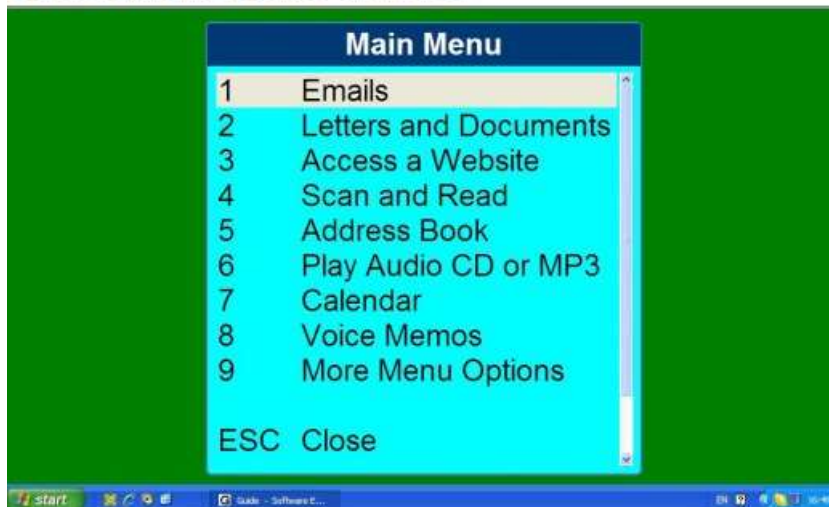
## Other options

Other good options for simplifying the computer user interface would include The Grid 2 from Sensory Software and The Guide from Dolphin. Both of these are commercial products and cost in excess of €400 but for this they offer a level of support not available in many less expensive or open source alternatives.



The Grid 2 (pictured above) would be more suitable for those with a physical disability that makes accessing the small icons on a regular computer difficult or impossible. It is designed with alternative input devices in mind like switch access, eyegaze or touch screen. It is also frequently used by individuals with learning disabilities.

letters and other documents. Press 1 to send and receive emails.



The Guide (pictured above) has high quality Text-To-Speech (TTS), a high contrast simplified interface and can be used without a mouse. It is usually favoured by those with vision impairments or users who are totally new to computers. Through the Guide the user can access all the usual features of the computer.

### Contact Details

National Assistive Technology Training Centre, Enable Ireland, Sandymount Avenue, Sandymount, Dublin 4.

Tel: 01 2184100 E-mail: [at@enableireland.ie](mailto:at@enableireland.ie)

[Visit our e learning portal www.enableirelandat.com](http://www.enableirelandat.com)